

Presentation By John Beaumont

Artificial Intelligence

*Beyond Easy AI:
Navigating the Pitfalls
of ChatGPT*

Images in This Presentation Were Created Using ChatGPT



Welcome

In this class, we will cover:

- **Quick Recap**
- **The Problems with Gen-AI**
- **Some Examples**
- **Best Practices**

Accessing ChatGPT

<https://chat.openai.com/>

As of Feb 2025

Create an account


Email address*

|


Continue

Already have an account? [Login](#)

OR

 Continue with Google

 Continue with Microsoft Account

 Continue with Apple

Free

Explore how AI can help with everyday tasks

- ✓ Access to GPT-4o mini
- ✓ Standard voice mode
- ✓ Limited access to GPT-4o
- ✓ Limited access to file uploads, advanced data analysis, web browsing, and image generation
- ✓ Use custom GPTs

Have an existing plan? See [billing help](#)

\$0 / month

Get Free

Plus

Level up productivity and creativity with expanded access

- ✓ Everything in Free
- ✓ Extended limits on messaging, file uploads, advanced data analysis, and image generation
- ✓ Standard and advanced voice mode
- ✓ Limited access to o1 and o1-mini
- ✓ Opportunities to test new features
- ✓ Create and use custom GPTs

\$20 / month

Get Plus Limits apply >

Pro

Get the best of OpenAI with the highest level of access

- ✓ Everything in Plus
- ✓ Unlimited* access to o1, o1-mini, GPT-4o, and voice (audio only)
- ✓ Higher limits for video and screensharing in voice
- ✓ Access to o1 pro mode, which uses more compute for the best answers to the hardest questions
- ✓ Extended access to Sora video generation
- ✓ Access to Operator research preview (U.S. only)

*Usage must be reasonable and comply with our [policies](#)

\$200 / month

Get Pro

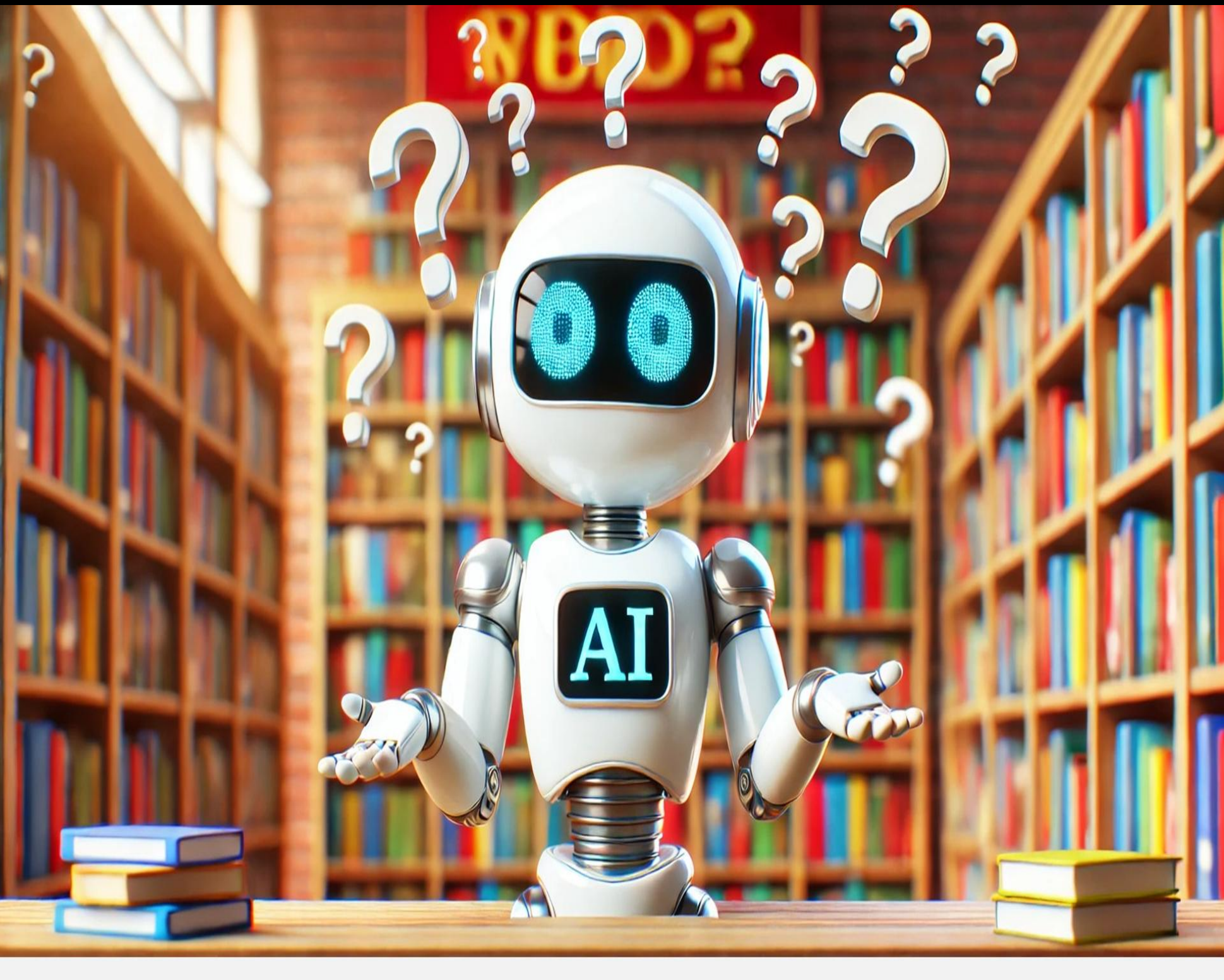
Who Has Used AI?



Who has used Gen-AI and has had unusual results?

“Problems” with Gen-AI

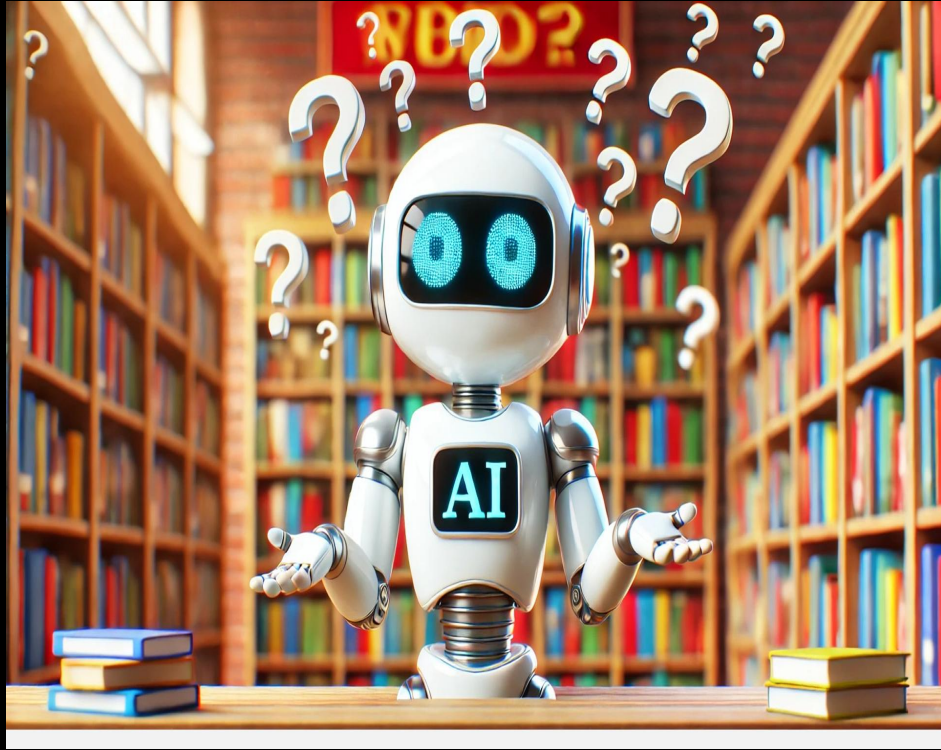




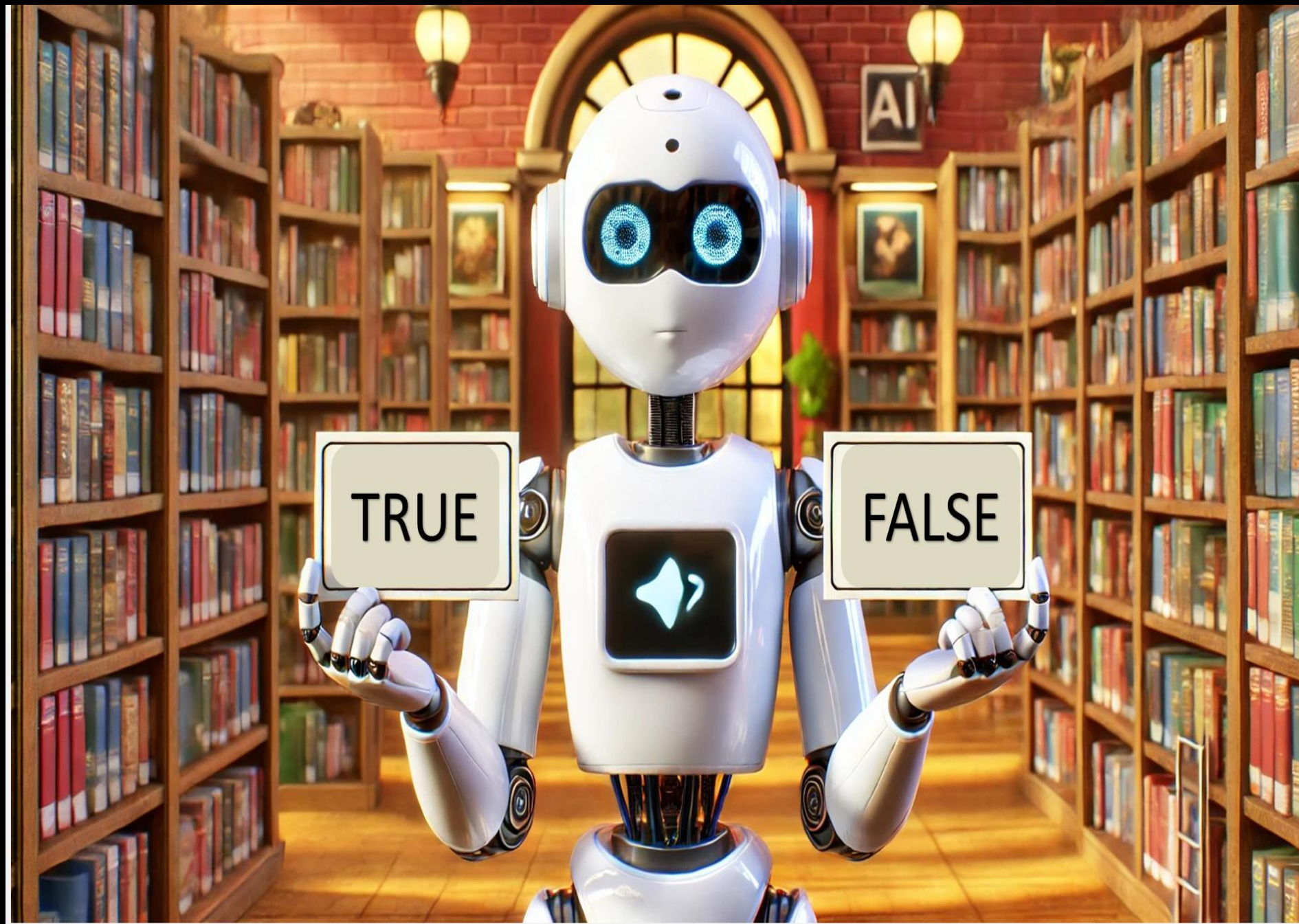
Gen-AI generates outcomes, but it doesn't understand them.

Gen-AI does not think like a human.

AI Doesn't Think Like Us



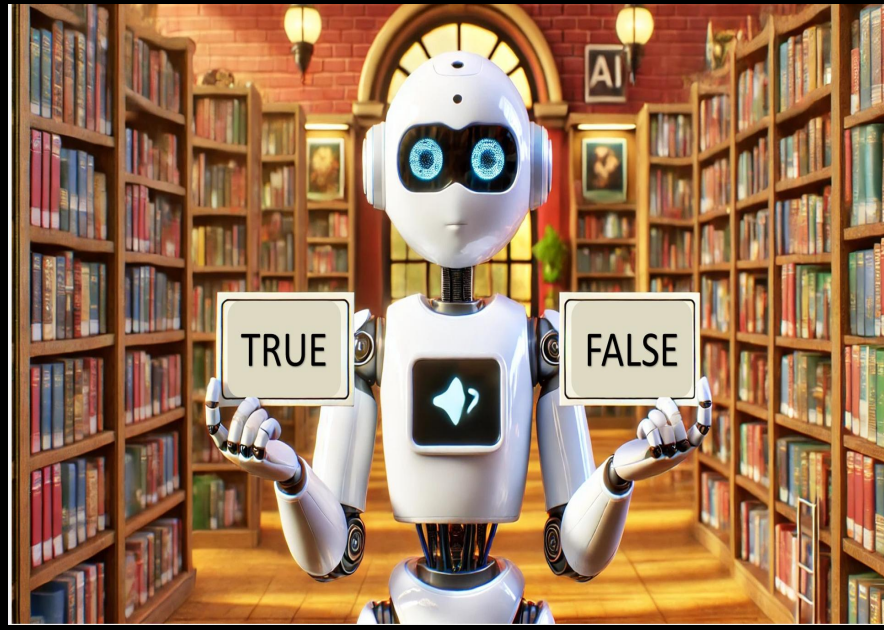
- Always apply human judgment and critical thinking.
- Treat AI-generated responses as suggestions, not conclusions.
- Use AI to assist, but don't rely on it for final decisions.
- Do not rely on Gen-AI for critical decision making



AI does not verify truth.

Responses are based on training data patterns.

Can't Handle The Truth



- Fact-check AI responses using credible sources.
- Cross-reference AI outputs with authoritative websites, books, or subject matter experts.



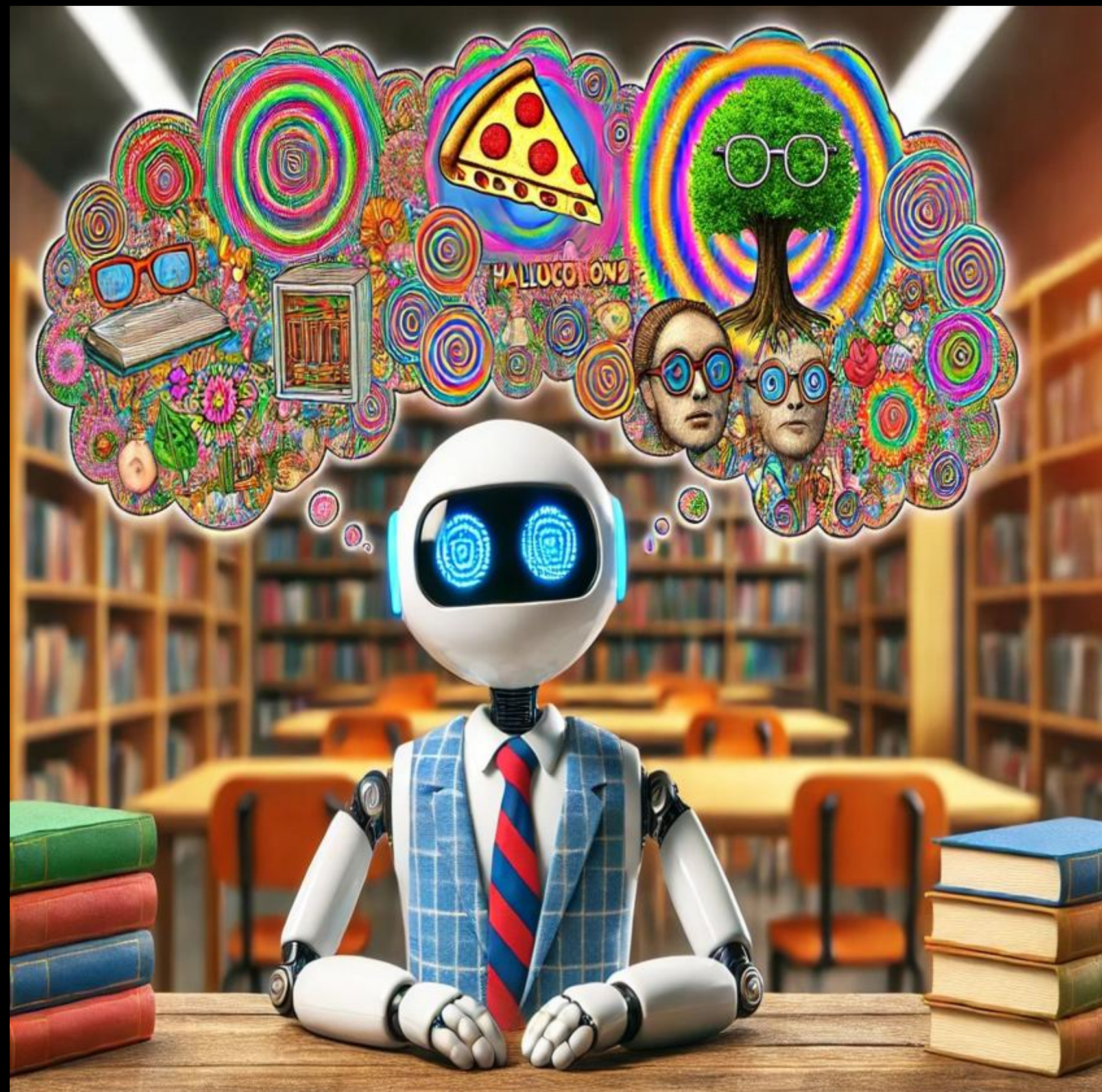
Gen-AI can give very convincing incorrect answers.

Confident Wrong Answers



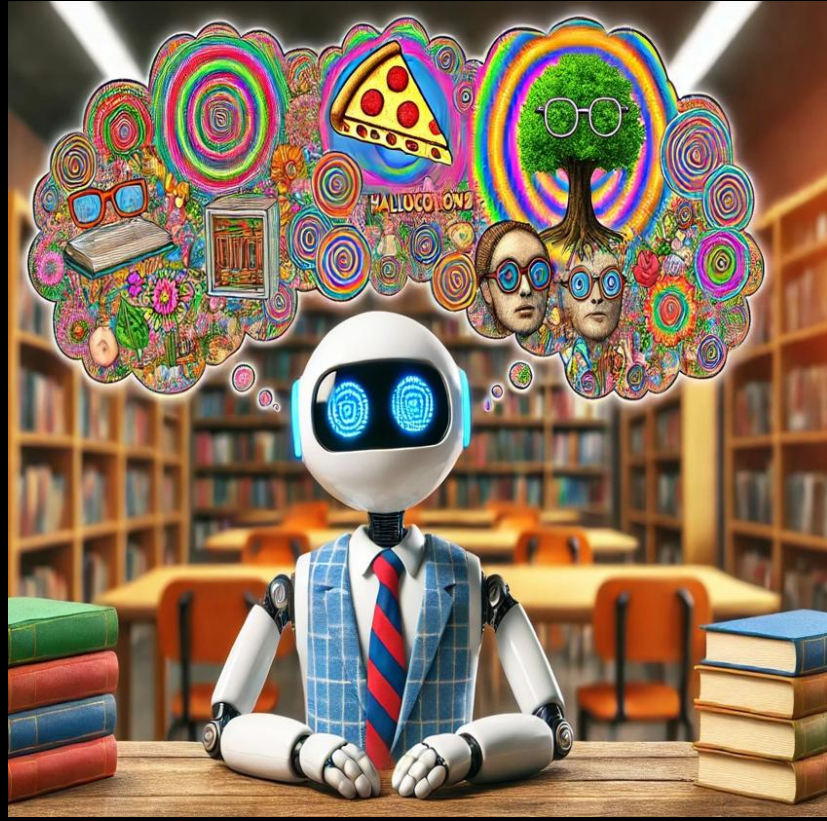
- Ask AI to provide sources and verify them independently.
- If citations are given, check whether they actually exist.
- Reframe the prompt and check for inconsistencies in multiple responses

**** Never take expert, medical or legal advice from Gen-AI***

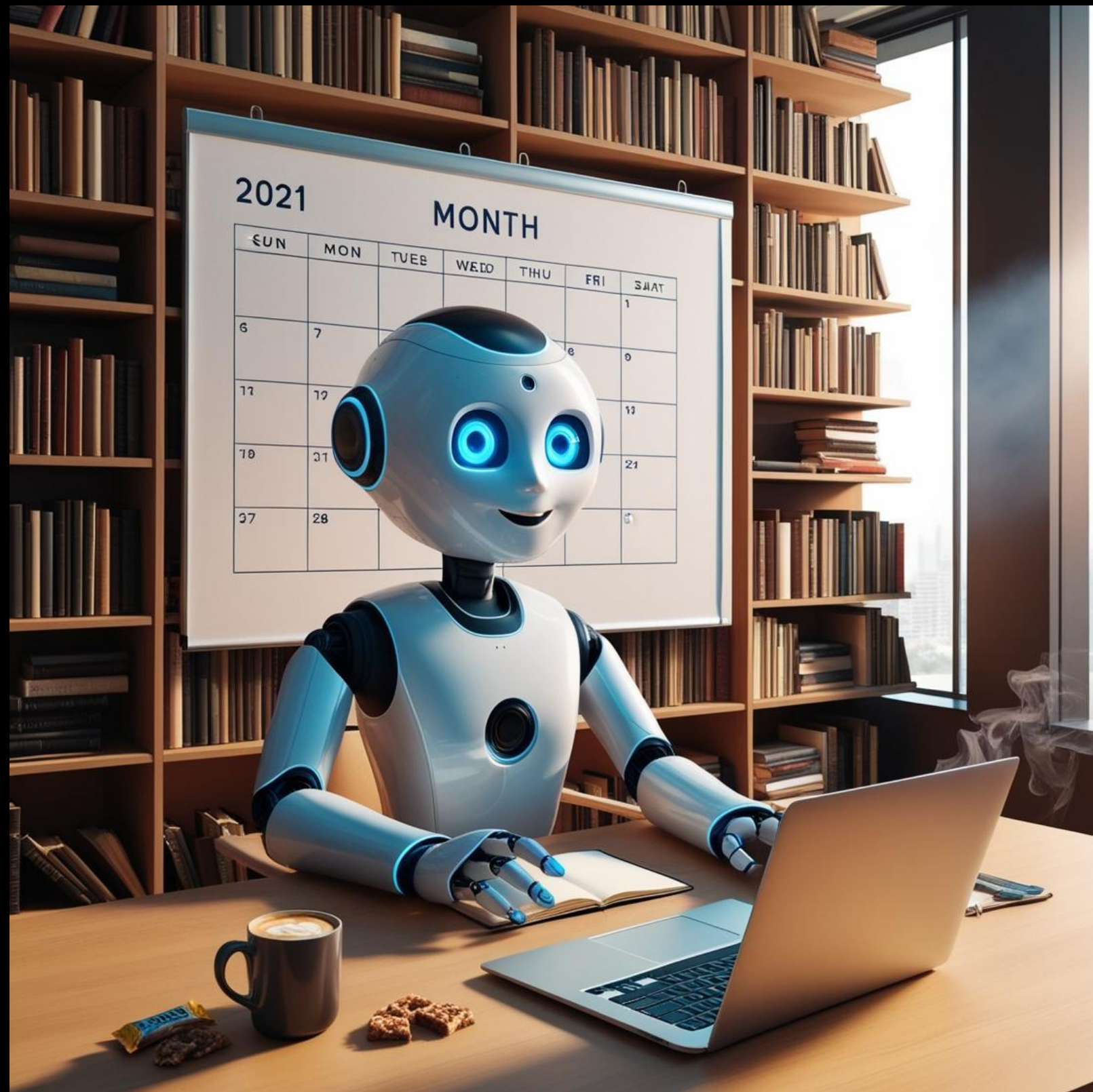


AI may hallucinate,
fabricating facts,
citations, or details.

AI Hallucinates Information

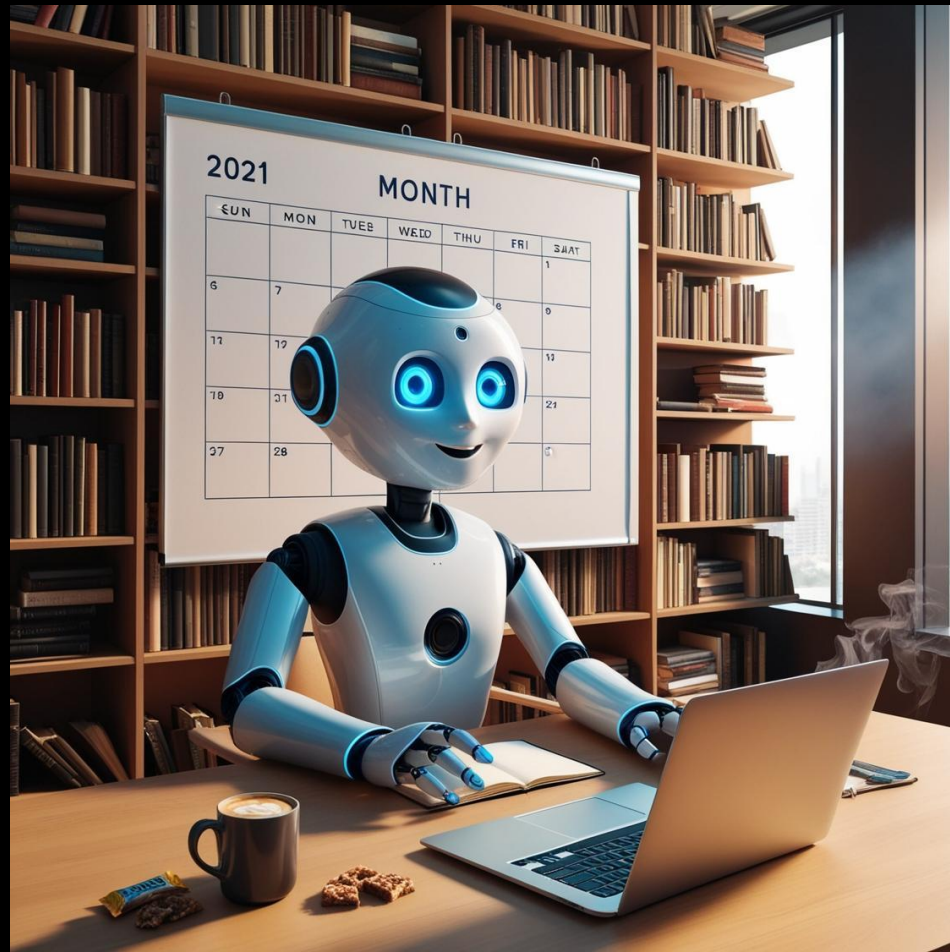


- Never assume AI-generated content is 100% accurate.
- Use AI outputs as a starting point, not as a final answer.
- If working in academic research, consult primary sources.

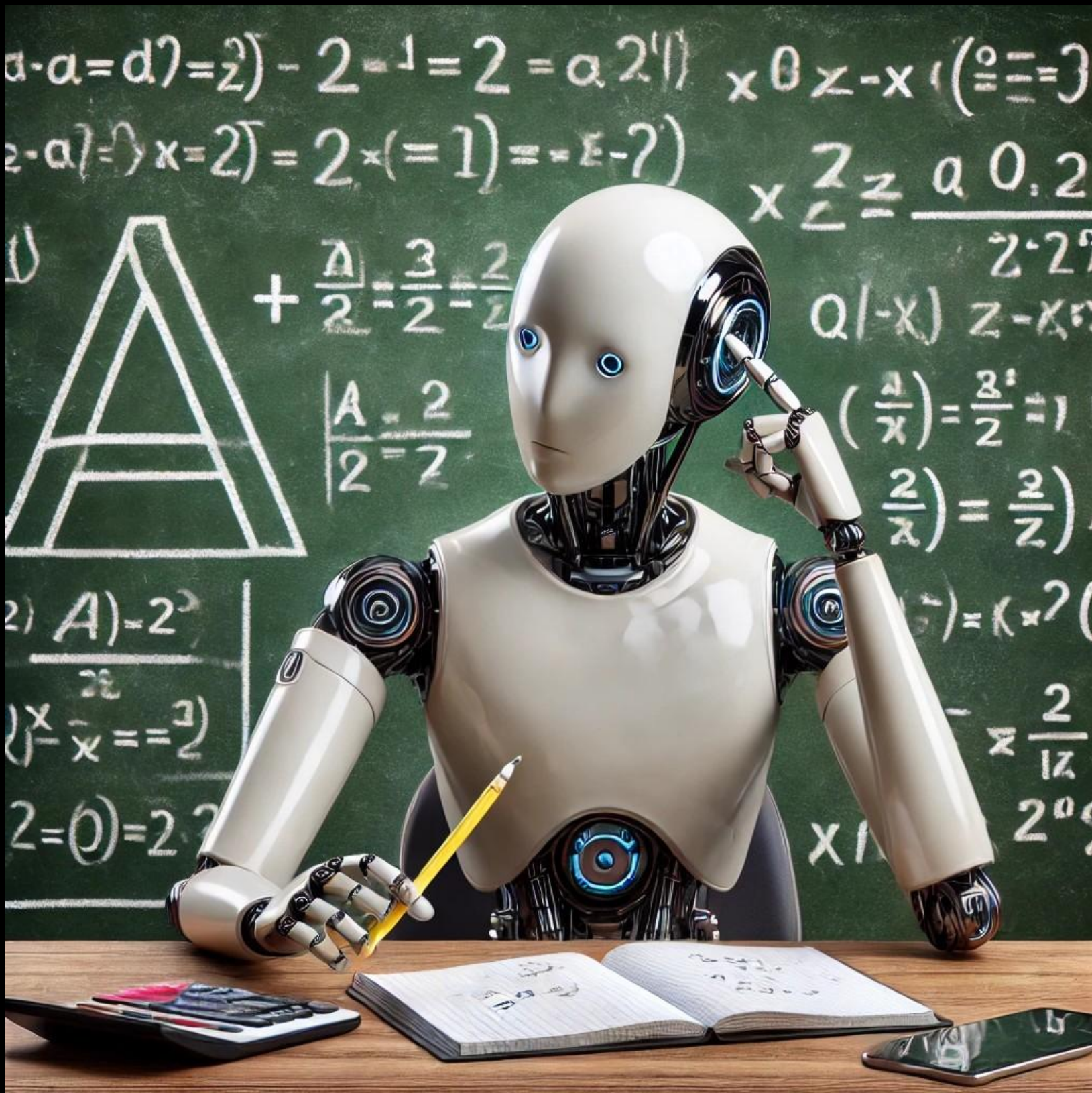


AI responses may be outdated.

Outdated Data Risks

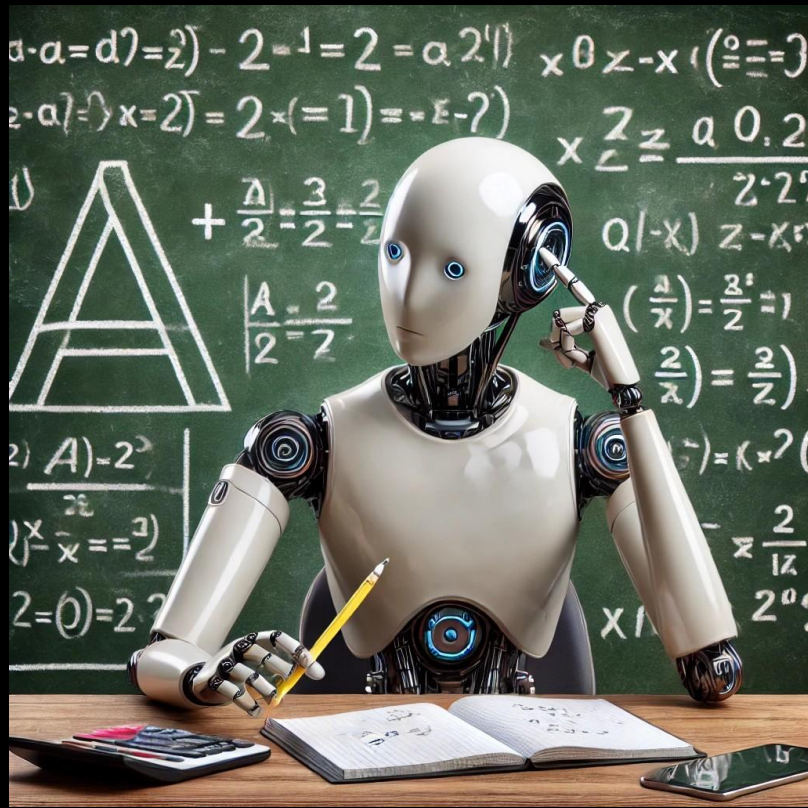


- Always verify time-sensitive information with up-to-date sources
- If using AI with web search capabilities, confirm the sources it retrieves
- Be aware of when and how the model was trained



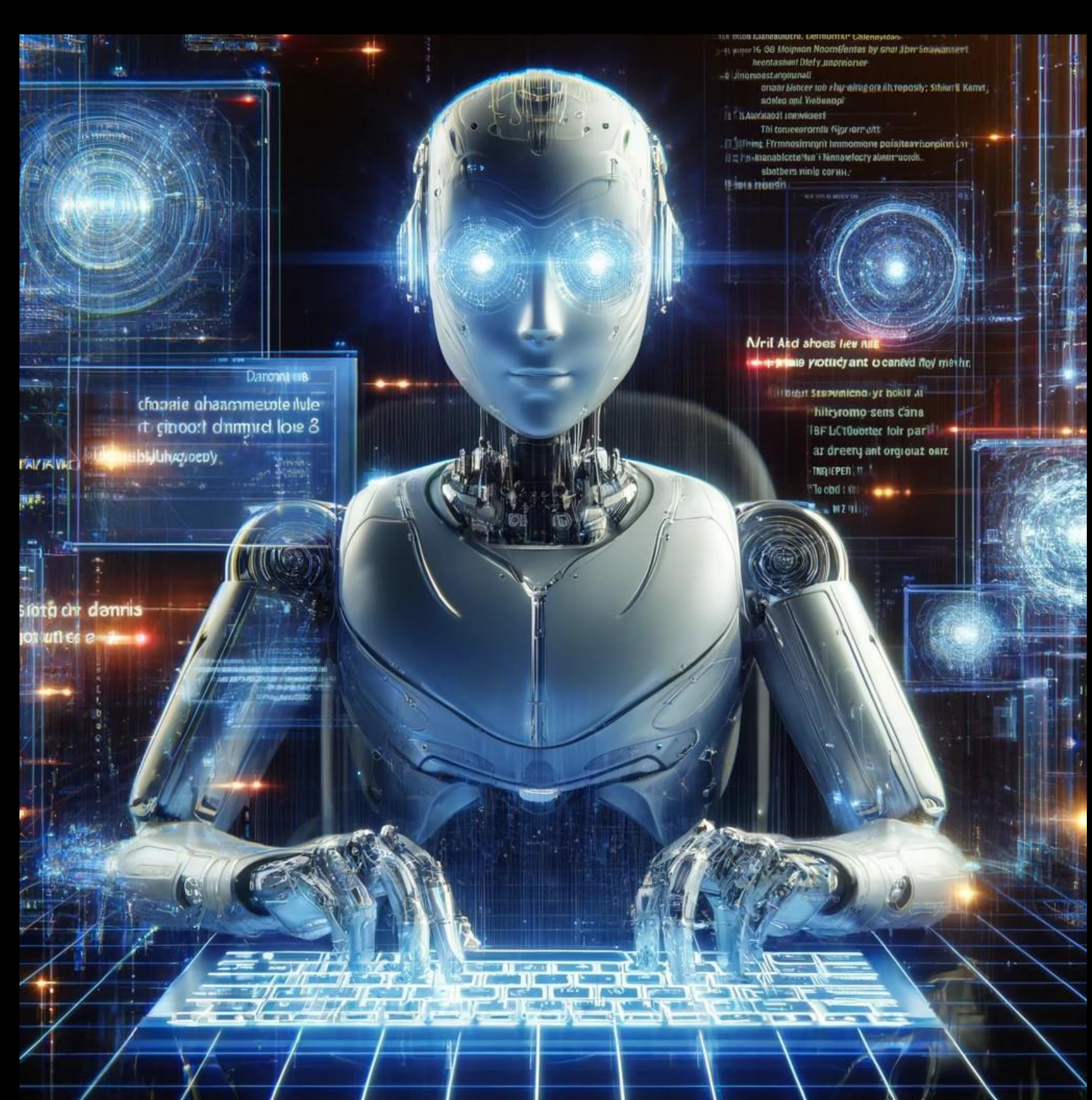
**Gen-AI struggles
with multi-step logic
and precise
calculations**

GEN-AI Fails at Logic



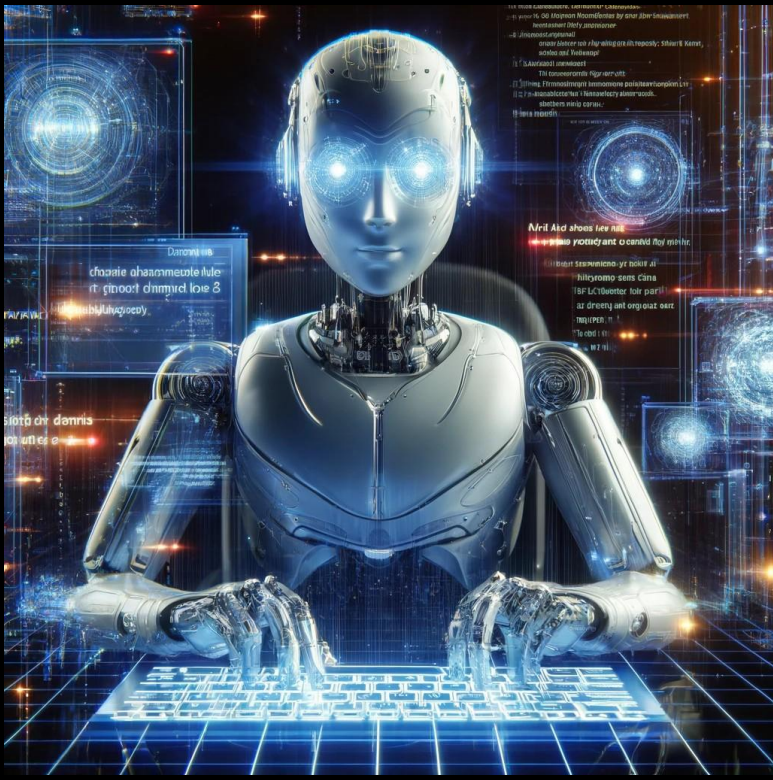
** Many AI Systems, such as ChatGPT, now have a logic model that is tuned for calculations*

- Break down complex problems into smaller steps and verify each one.
- Use a dedicated calculator or spreadsheet for precise calculations.
- When researching dates, manually check historical timelines.



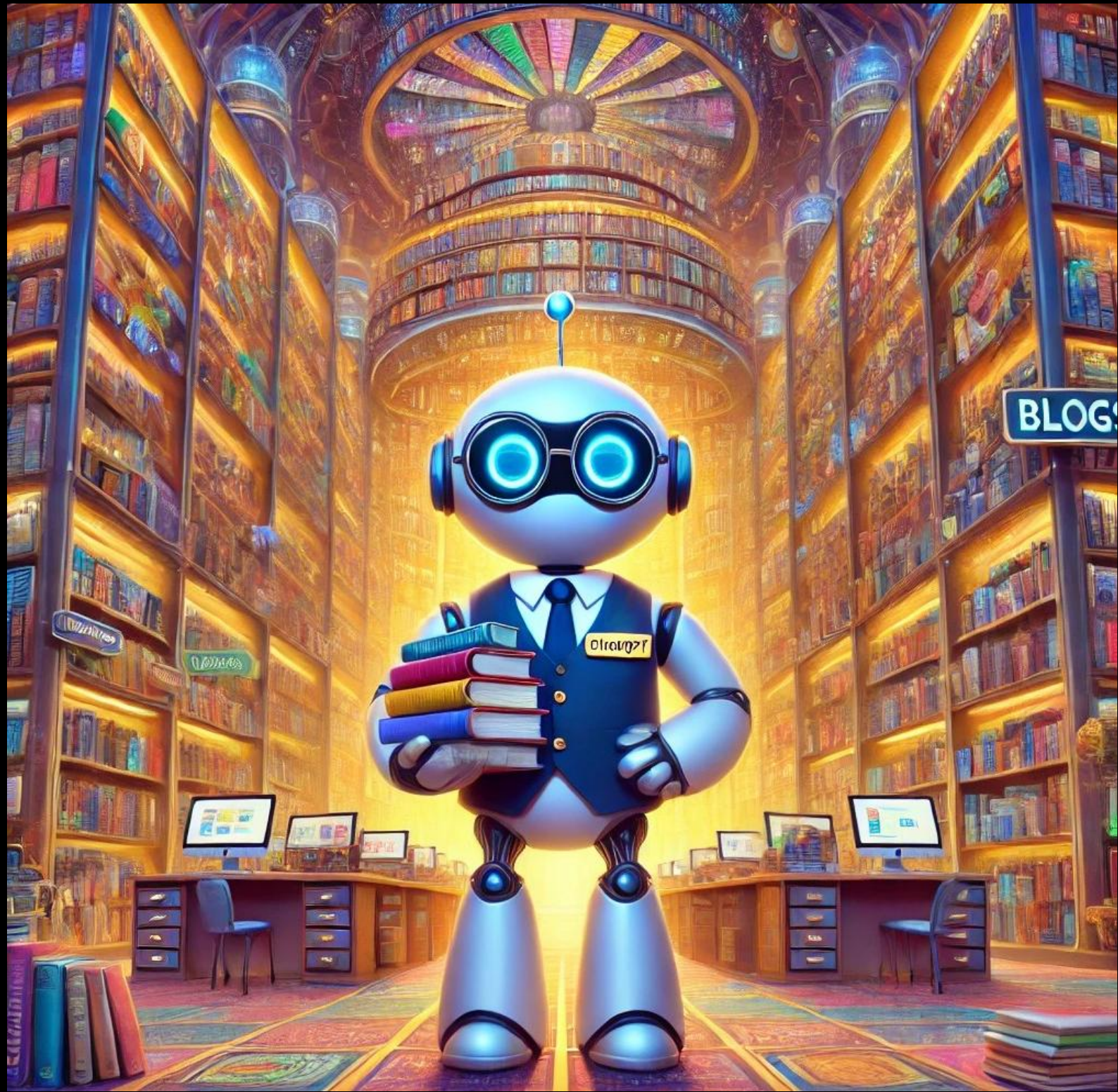
The quality of the Gen-AI output is dependent on the strength of the prompt.

Better Prompts, Better Output



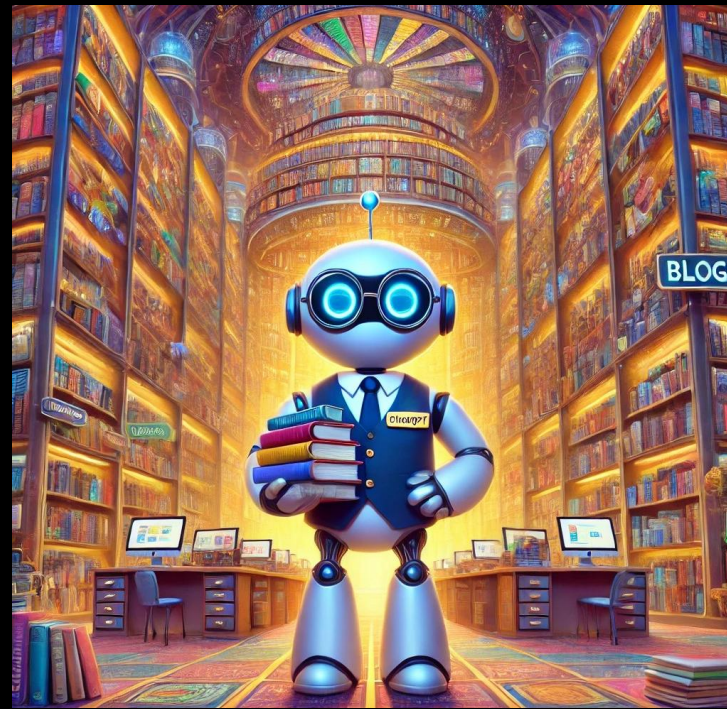
- Use precise, structured prompts.
- Provide depth, context, and constraints.
- Iterate and refine prompts based on initial responses to improve response.

** You can ask AI to help you design an efficient prompt.*



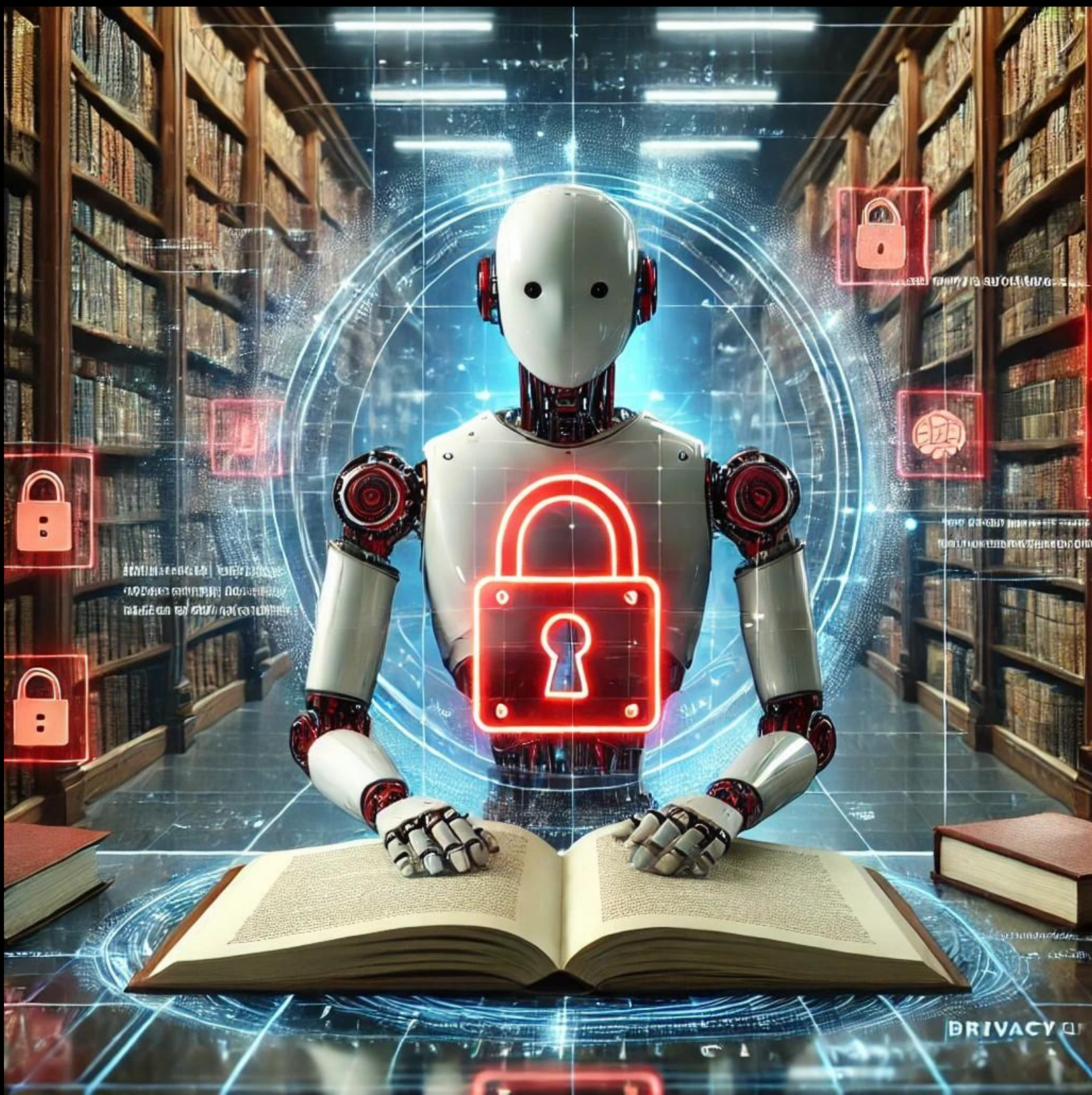
Background
Personalization and
chat history may
reinforce bias.

AI Learns Your Bias



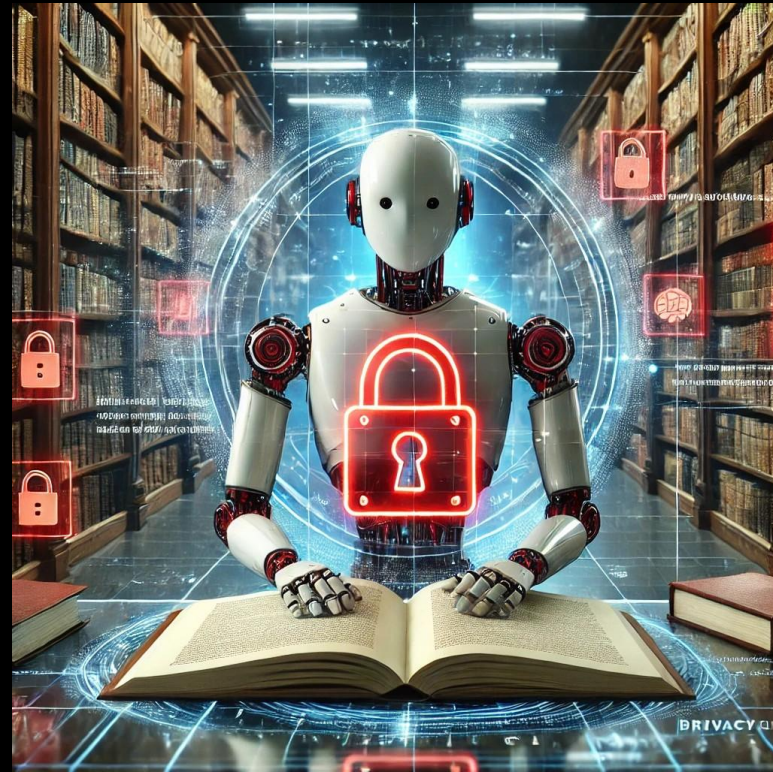
**** AI can (does!) inherit biases from training data.***

- Review and reset personalization.
- Restart long conversations
- Prompt for different perspectives



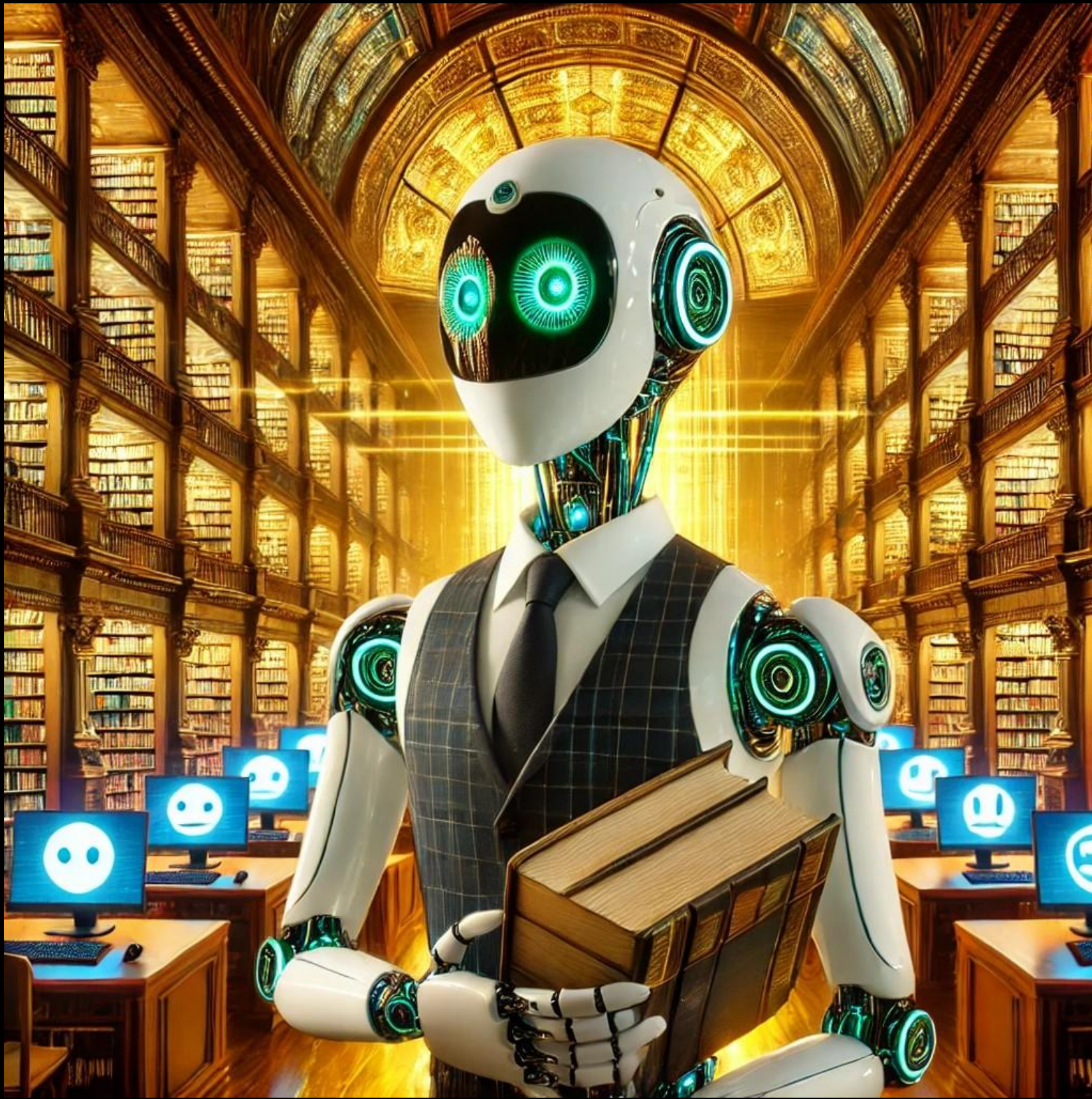
Unknown or unclear security or privacy measures.

Privacy Isn't Guaranteed



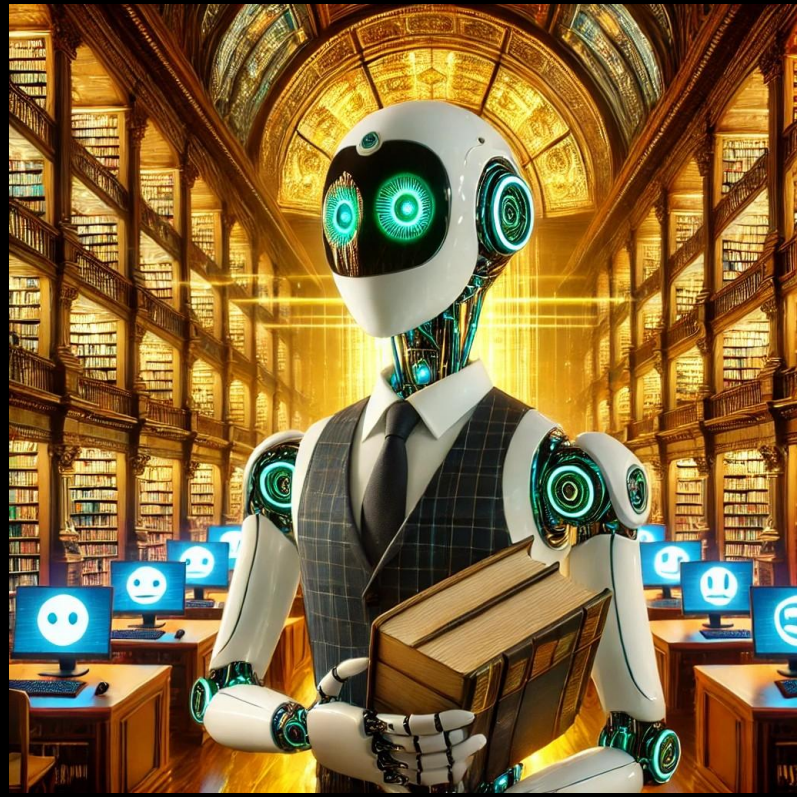
** Ensure you know which model you are using some may be presented under different names.*

- Avoid sharing personal, sensitive, or confidential information.
- Use AI services with strong privacy policies.
- Do not use AI systems that originate from adversarial countries (for example, DeepSeek)



AI can lack
emotional
intelligence and
misinterpret tone.

Tone Deaf



- Clarify the output tone in the prompt (formal, friendly etc.)
- AI may not understand sarcasm, humor, or emotional nuance when reviewing documents.



Gen-AI never gives exactly the same answer to the same question.

Different Answers



- Use clear and unambiguous prompts.
- Ask AI to explain differences.
- Begin a new conversation with the same prompt to check for consistency.

** Most differences are in how the answer is expressed rather than the actual “answer.”*

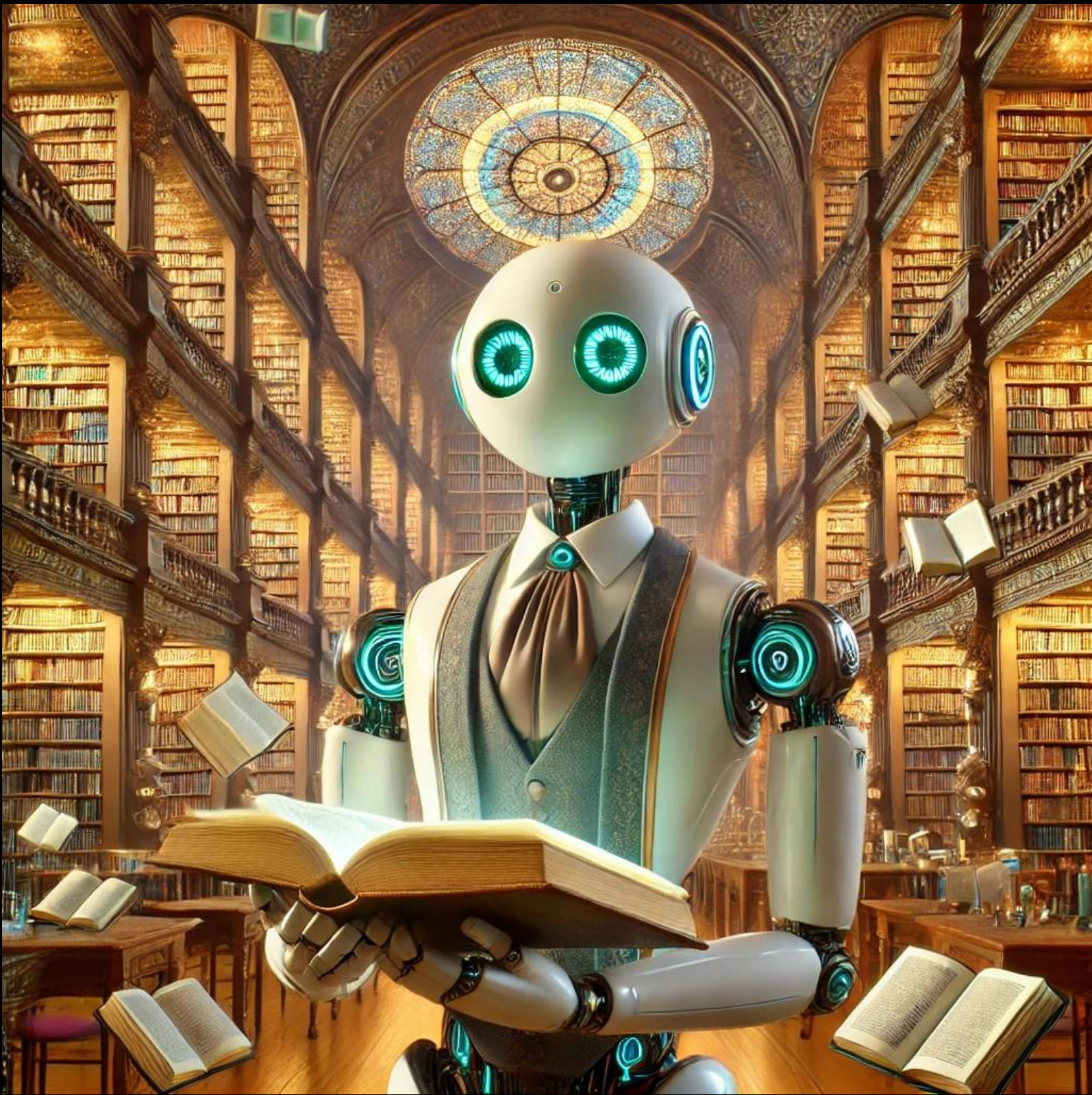


AI can add unnecessary 'fluff' or irrelevant details.

Too Much Fluff

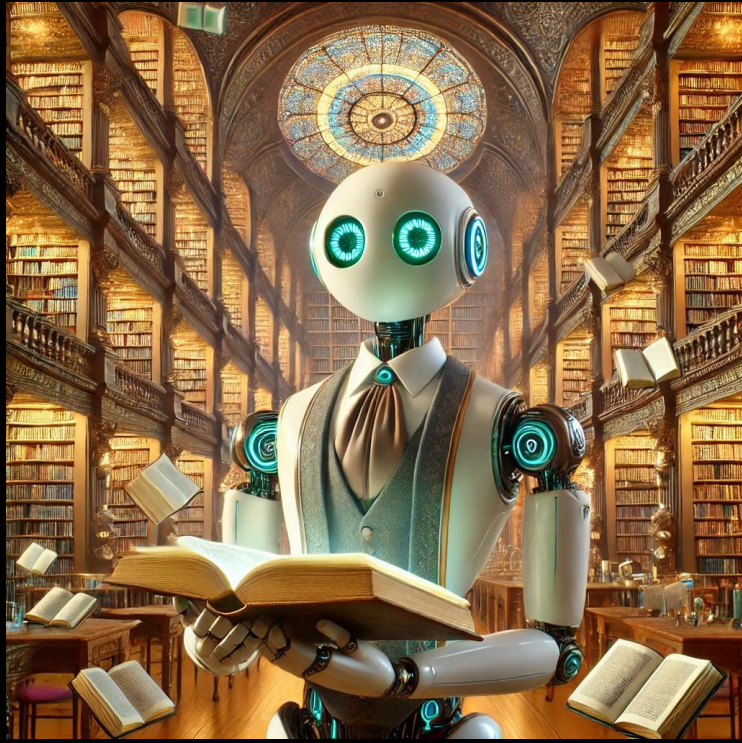


- Request more concise answers: "Answer in one paragraph."
- If AI over-explains, refine your prompt: "Be direct and to the point."
- Always edit AI responses manually for clarity.



AI struggles with maintaining context or “remembering” details in long conversations.

Loses Track



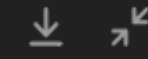
- If discussing a long topic, periodically summarize: “Here’s what we’ve covered so far...”
- Use numbered steps to help AI track multi-step processes.
- If AI loses track, remind it of previous points or restart the conversation.

Examples of Gen-AI problems



AI Fails at Logic

Corrected Engineer Rotation Schedule With 11-Hour Rest Compliance



Week	Morning (6am–2pm)	Afternoon (2pm–10p)	Night (10pm–6am)	Weekend (Sat 6am–2pm)
1 1	Engineers A & B	Engineers C & E	Engineers F & D	Engineer A
2 2	Engineers C & D	Engineers B & F	Engineers A & E	Engineer C
3 3	Engineers E & F	Engineers A & D	Engineers C & B	Engineer E
4 4	Engineers A & C	Engineers E & F	Engineers D & F	Engineer B
5 5	Engineers B & D	Engineers C & A	Engineers E & C	Engineer D
6 6	Engineers F & D	Engineers B & E	Engineers A & C	Engineer F

Trying to create a rotating shift pattern –
ChatGPT constantly broke the rule I gave it of
at least 11 hours of rest between shifts

Please help me work out an optimum shift pattern for 6 engineers:

-
- 6 engineers
- 24 hour cover
- 6am Monday to 6am Saturday
- 1 engineer to cover a weekend
- Preferably not 12 hour shifts
- 2 engineers per shift
- Average 40 hours a week
- The weekend is Saturday you're expected to work 6-2 and Sunday on call
- We only do weekend cover when we're coming off an earlies shift at the moment

you can ask me questions (one at a time) or make

Message ChatGPT



Fluff and Extra Details

Children (5)

- Charles William Beaumont B: 1905
- Arthur Ernest Beaumont B: 1907
- Sidney James Beaumont B: 1910
- Bertha Elizabeth Beaumont B: 1912

Parents

- Charles William Beaumont 1853-1918
- Mary Ann Matilda Clover 1854-1932

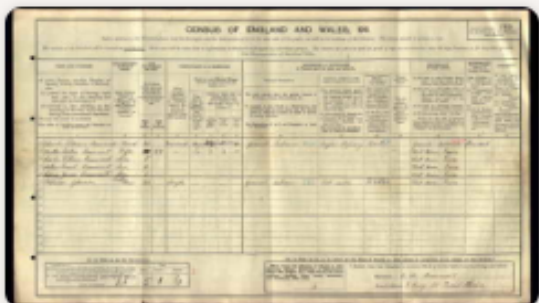
Charles William Beaumont
B: 05 Jun 1880 in Greenock, Renfrewshire, Scotland
D: 04 Feb 1947 in West Ham, Essex

Bertha Sophia Glasson
B: 05 Mar 1883 in Poplar, London

Charles William Beaumont

in the 1911 England Census

Save Print Share



Add or update information
Report a problem

Explore records with AI

Learn what this record has to say with AncestryAI.

Qi Ask AncestryAI

✓ This record is saved to 3 people in 2 family trees

Detail	Source
Name	Charles William Beaumont
Age in 1911	30
Estimated Birth Year	abt 1881
Relation to Head	Head
Gender	Male
Birth Place	Greenock, Scotland
Civil parish	West Ham
County/Island	Essex
Country	England
Street Address	3 Kerry Street, Tidal Basin
Marital Status	Married

Suggested records

- 1921 England Census
Charles William Beaumont
- 1881 Scotland Census
Charles W Beauman
- 1901 England Census
Charles Beaumont
- 1891 England Census
Charles Beaumont
- 1939 England and Wales Register
Chas W Beaumont
- London, England, Church of England Marriages and Banns, 1754-1938

Explore records with AI

Charles William Beaumont

Based on information from the 1911 England Census

In 1911, in the bustling town of West Ham, Essex, Charles William Beaumont, a 30-year-old general laborer from Greenock, Scotland, resided at 3 Kerry Street with his young family. His wife, Bertha Sophia, aged 27, and their three sons - Charles William, Arthur Ernest, and Sidney James - created a lively household of six. The presence of Charles' 22-year-old brother-in-law, Thomas Glasson, added an extra dynamic to their daily lives. The close-knit family unit navigated the challenges and joys of early 20th-century England together, each member playing a unique role in the fabric of their shared existence.

Was this information useful?

Want to save this?

Powered by AncestryAI **Qi BETA**

This feature is powered by an AI language model using only information from this record. Responses may be inaccurate.

Share feedback

Fluff and Extra Details

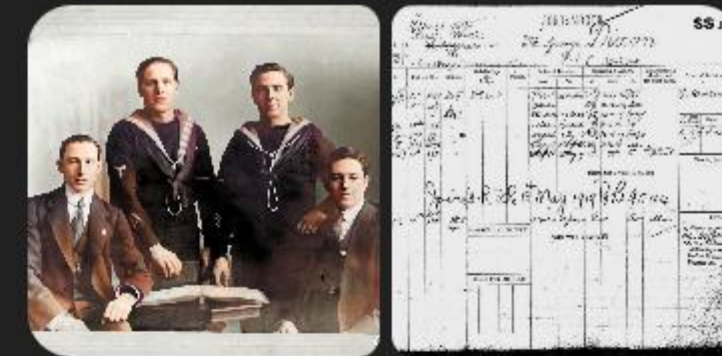
Explore records with AI

Charles William Beaumont

Based on information from the 1911 England Census

In 1911, in the bustling town of West Ham, Essex, Charles William Beaumont, a 30-year-old general laborer from Greenock, Scotland, resided at 3 Kerry Street with his young family. His wife, Bertha Sophia, aged 27, and their three sons - Charles William, Arthur Ernest, and Sidney James - created a lively household of six. The presence of Charles' 22-year-old brother-in-law, Thomas Glasson, added an extra dynamic to their daily lives. The close-knit family unit navigated the challenges and joys of early 20th-century England together, each member playing a unique role in the fabric of their shared existence.

Making Stuff Up – Hallucinating



The photo was taken in early 1919. George Dixon is 2nd from the left. He served in the Royal Navy during WW1. Attached is his service record. Please transcribe the service record, transcribing ONLY the legible entries. If an entry is illegible or unreadable indicate that it is unreadable. Can you discover anything interesting from George's uniform in the picture that would correspond to the service record.

Transcription of George Dixon's Service Record (Legible Entries Only)

- Date of Birth: April 1895



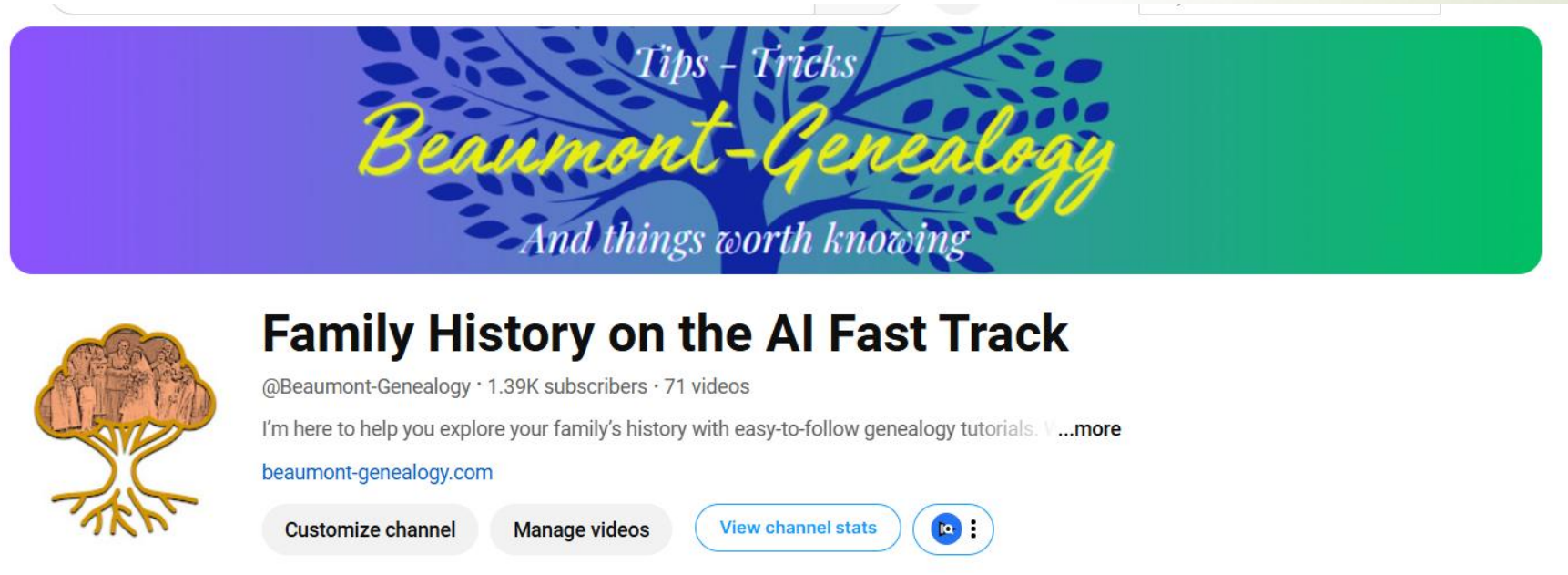
Message ChatGPT



Search



Any Questions?



My YouTube Channel:

<https://www.youtube.com/@Beaumont-Genealogy/videos>

My Genealogy Website: (for this Presentation)

<https://www.beaumont-genealogy.com/classes>

My Email:

John.Beaumont@Outlook.com

