

Presentation By John Beaumont

Artificial Intelligence

Easy AI: Using ChatGPT for Everyday
Tasks:

Part One: Language

Images in This Presentation Were Created Using ChatGPT





**A welcome message from
my great-great-
grandfather.**



Produced with AI tools from  MyHeritage

Welcome

In this part, we will cover:

- **Some AI Terms You Might Hear**
- **The Evolution of AI**
- **Some Practical Uses**
- **Real Time Examples**

Some Terms You Might Hear



Defining Artificial Intelligence

Artificial Intelligence, or AI

- Attempts to mimic human intelligence and reasoning.
- It is designed to perform either generic or specific tasks.
- Improves through learning and feedback.

Defining Specific AI

Specific or Narrow AI

- Designed for one specific task (GPS, Translation, Speech Recognition.)
- Widely used but not widely identified as AI.
- Designed to be accurate and avoid mistakes

Defining Generative AI

Generative AI

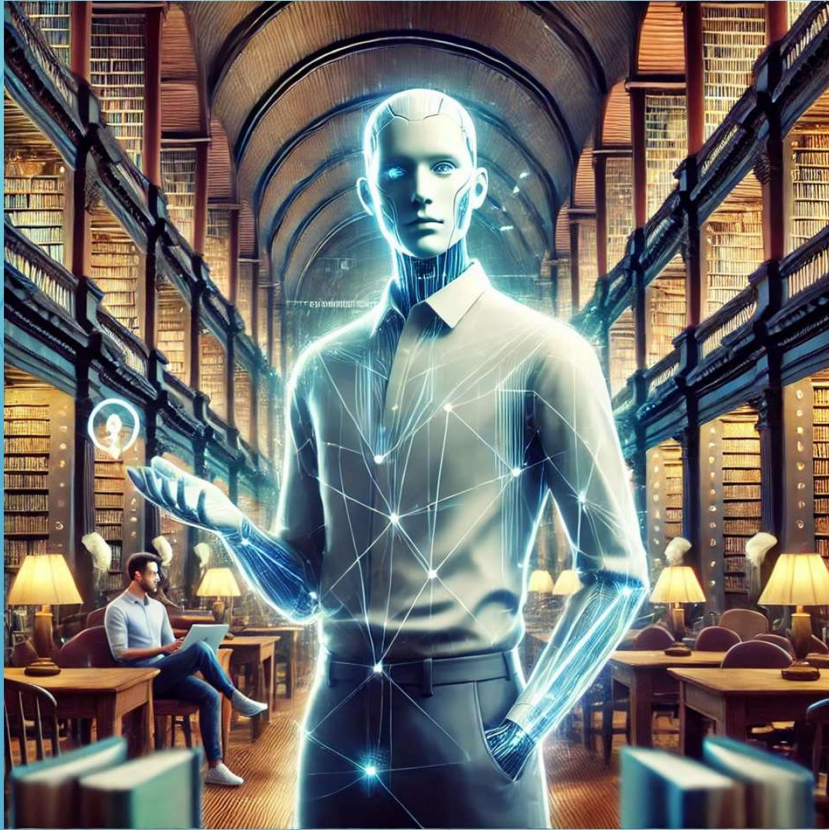
- Creates (generates) new content (text, images, chatbots.)
- Widely in the news at the moment.
- Designed to be intuitive and can make mistakes.

Defining Large Language Model

A Large Language Model (LLM)

- Specific type of Generative AI that focuses on text.
- Can communicate in a human-type conversational way.
- Understands questions, context and can be very creative.

Generative AI - Imagined



He'll make up an answer if he doesn't know.



She gives differing answers to the same question.

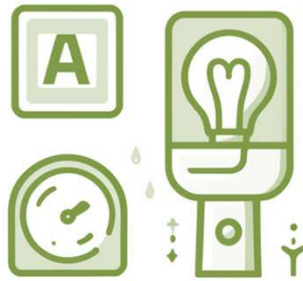
The Evolution of AI



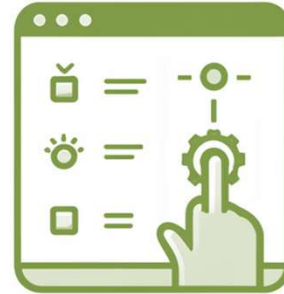
The Evolution of AI



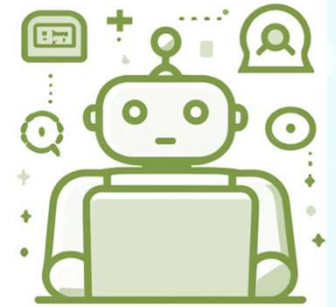
Decision
Making
Systems



Adaptive
Systems



Learning
Systems



Cognitive
Systems

The Evolution of AI



AI systems at this stage make specific decisions based on predefined rules and data.



These systems can adjust their behavior based on changes in their environment or new information.



AI learns from vast amounts of data and can generate contextually appropriate responses and content based on its knowledge without programming.



Future AI will perform complex thought processes, mimicking human cognitive abilities without intervention

Practical Uses of AI



Practical Uses – Generative AI

We will have conversations rather than searches



Google
Gemini



Bing
COPILOT

ChatGPT



! WARNING

**Gen-AI Can
Make Mistakes**

AI systems can produce incorrect/misleading information based on their training data.

They lack true understanding, leading to potentially inappropriate responses.

They cannot always verify current information.

AI systems can mimic experts but often without their experience and knowledge.

All generative AI responses need human verification.

Accessing ChatGPT

<https://chat.openai.com/>

Create an account


Email address*

|

Continue

Already have an account? [Login](#)

OR

 Continue with Google

 Continue with Microsoft Account

 Continue with Apple

Free

For individuals just getting started with ChatGPT

- ✓ Assistance with writing, problem solving and more
- ✓ Access to GPT-4o mini
- ✓ Limited access to GPT-4o
- ✓ Limited access to data analysis, file uploads, vision, web browsing, and image generation
- ✓ Use custom GPTs

\$0 / month

Plus

For individuals looking to amplify their productivity

- ✓ Early access to new features
- ✓ Access to GPT-4, GPT-4o, GPT-4o mini
- ✓ Up to 5x more messages for GPT-4o
- ✓ Access to data analysis, file uploads, vision, and web browsing
- ✓ DALL-E image generation
- ✓ Create and use custom GPTs

\$20 / month

As of Aug 2024

The Prompt Screen

(as of Aug 2024 – paid account)

The screenshot shows the OpenAI ChatGPT interface. A yellow box highlights the left sidebar, which contains navigation options like 'ChatGPT', 'DALL-E', 'Video AI', and 'Explore GPTs', along with a list of 'Previous Conversations' categorized by date (Today, Yesterday, Previous 7 Days). Another yellow box highlights the 'Model' selection dropdown, showing options for 'GPT-4o', 'GPT-4o mini', 'GPT-4', and 'Temporary chat'. A third yellow box highlights the 'Prompt' input area at the bottom, which includes a 'Message ChatGPT' placeholder, a 'Get citation' button, and a send button. The main content area features the OpenAI logo and four example prompts: 'Explain nostalgia to a kindergartener', 'Pick outfit to look good on camera', 'Make me a personal webpage', and 'Superhero shark story'. A 'Save as PDF' button is visible in the top right corner.

Available Versions

- Model
- GPT-4o
Best for complex tasks
 - GPT-4o mini
Faster for everyday tasks
 - GPT-4
Legacy model
 - Temporary chat

Previous Conversations

Prompt

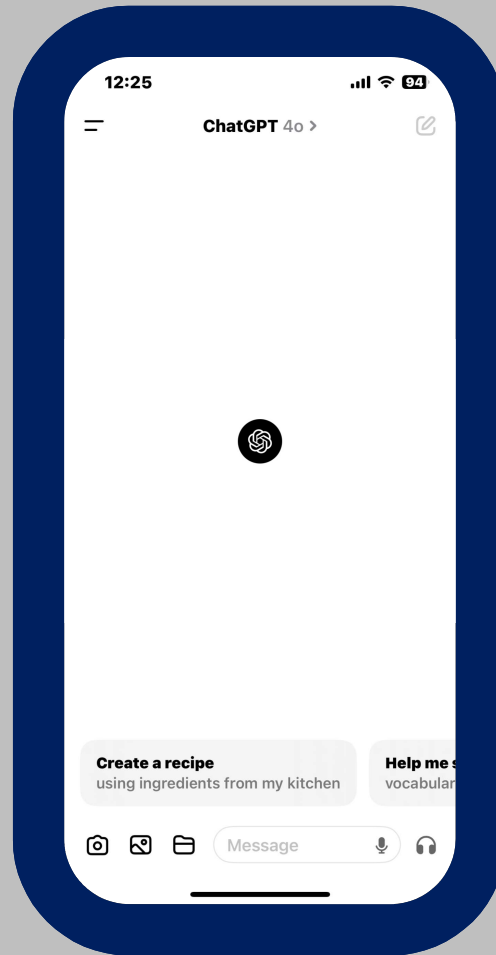
Message ChatGPT

Get citation

The Prompt Screen

(as of Aug 2024 – paid account)

Also available
for download
to your
Smartphone



Works the
same way as the
web version

General Uses (and Many More)

You use the **Prompt** to interact with the AI in a conversation



Conversational Assistance: (Casual Conversations & general Q&A)

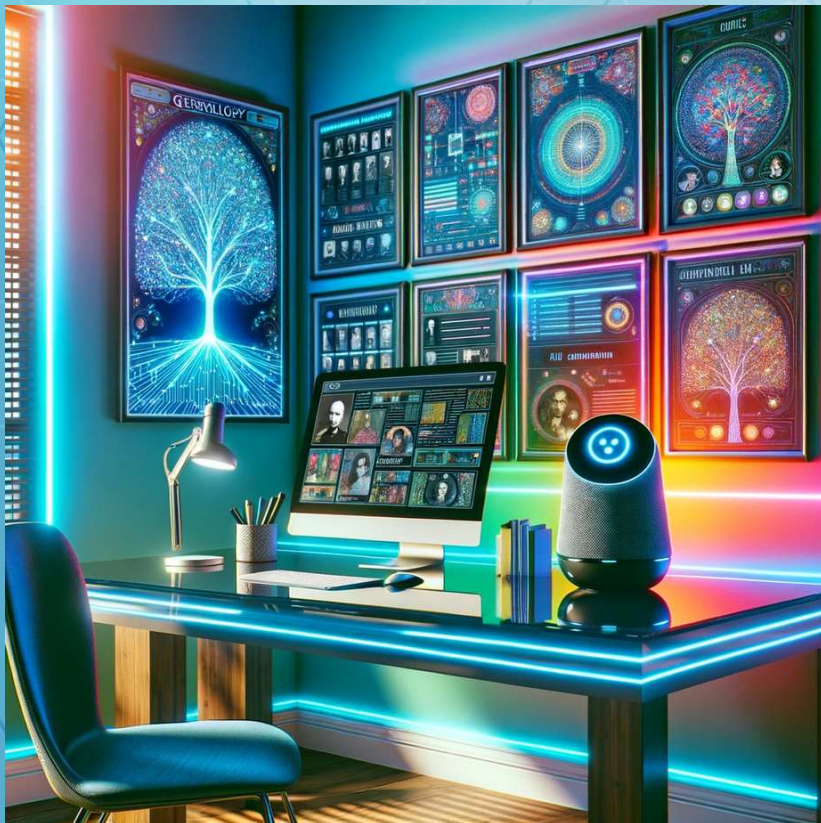
Creative Writing and Content Generation: (Story Generation & Brainstorming Ideas)

Learning and Tutoring: (Educational Assistance & Language/Translation Practice)

Task Assistance and Productivity: (Writing and Editing Support & Research)

AI as my Assistant

I use AI (BING CoPilot & ChatGPT) Extensively



Acting as my Research Assistant

Examining Documents and Images

Suggesting Research Strategies

Drafting Documentation

Suggesting Source Repositories

Checking my work for errors



[Welcome Email](#)

Getting Started With AI



Example 1: Writing & Text

Basic ChatGPT Functionality



⚠ WARNING
Gen-AI Can
Make Mistakes

 [Conversation Link](#)

Grammar and Spelling	Style and Tone	Content Creation
Summarization	Research and Information Gathering	Translation
Editing and Rewriting	Creative Writing	Technical Writing
SEO Optimization	Personalized Writing Assistance	Educational Support

Example 2: Planning a Vacation

Holiday Suggestions



Help me decide on my vacation this year **by asking me questions one at a time**. My budget is \$2000

Stay within the US - no more than 3 hours flight time from Tampa



[Conversation Link](#)

Example 3: Complex Conversation

Meal Plan and Shopping List



Help me plan dinner for four days. I will have three visitors at my home who prefer healthy meals, one is vegan. I would like the meals to be adaptable for both vegan and non-vegan palates rather than different meals. There will be five for dinner. I would like a variety of meals but a minimum number of ingredients . Ask me questions, one at a time, to create a meal plan.

Ask me the first Question.



[Conversation Link](#)

Example 4: Having Fun

Let's Talk About The Bucs 2024 Season



Here is a list of Tampa Bay Buccaneer's opponents for the 2024 NFL season. Acting as a Supporter for the Buccaneers, what are your upcoming 2024 season predictions for their win/loss for each game? Please predict a score and a one-sentence analysis:



[Conversation Link](#)

Example 5: Reading a Menu

Select dishes from a hard to read menu.

The menu is divided into several sections:

- Pizzas:** Includes items like Cheese, Pepperoni, Double Cheese, BBQ Chicken, Classic Veggie, Alpha Hawaiian, The Works, Buffalo Wings, Italian Meat & Cheese Pizza, Lunch (Southwest Chicken Quesadilla, Buffalo Bites, Club Wrap, Joe's Beer Battered Fish & Chips, Turkey Wrap, Pizza & Salad Combo), and Soup & Salad Combo.
- Handhelds:** Includes Sliders - Pick Three, Buffalo Chicken Sandwich, Grouper Sandwich, Classic Tuna Melt, Grilled Chicken Sandwich, TJ's Tacos, and Burgers (Bacon Cheese, Mushroom Swiss, Jalapeno Joe, Black & Blue, Tampa Joe's Classic).
- Entrees:** Includes Beef & Bacon Kabobs, Slow Roasted ribs, Chicken, Rice & Broccoli, Chef's Selection Steak, Chicken Tenders, Fish & Chips, Grilled Salmon, Tampa Joe's Cuban, BEEF TIP SANDWICH, NOT YOUR KID'S MAC & CHEESE, CAJUN CHICKEN ALFREDO, ITALIAN MEAT & CHEESE, JOE'S CARBONARA, and FETTUCCINI ALFREDO.
- Burgers:** Includes Bacon Cheese, Mushroom Swiss, Jalapeno Joe, Black & Blue, and Tampa Joe's Classic.
- Pasta:** Includes Not Your Kid's Mac & Cheese, Cajun Chicken Alfredo, Italian Meat & Cheese, Joe's Carbonara, and Fettuccini Alfredo.
- Daily Specials:** A section at the bottom left with a football graphic, listing specials for Monday through Sunday.

Please read this menu - I am on a low-fat diet. What would your suggestions be?

I have a friend who has a keto diet, please find recommended dishes for her



Example 6 : Chatbot Simulation

ARC Rules interpretation



This document are our community rules for architectural changes. Please read and answer any questions I may have regarding changes to my home.



[Conversation Link](#)

Example 7: Report Reviewing

Examine and Summarize a Complex Report

5 - Case Study: Conflicting, Indirect or Negative Evidence

Research Question

Were Samuel and Sarah Beaumont the parents of Thomas Beaumont who married Selina Cato on 7 December 1835?

Objective

Establish that Thomas Beaumont was the son of Samuel and Sarah Beaumont using indirect and negative evidence.

Problem to be solved

No direct evidence or vital records connecting Thomas Beaumont to his parents.

It was on the 7 December 1835 that Thomas Beaumont married Selina Cato at the Parish Church of St Mary in Rickmansworth, Hertfordshire, England.¹ This is the earliest vital record that can be found for Thomas. Working from the information in the marriage registration the subsequent census records for Thomas and Selina can be found. The census entries for Thomas Beaumont for 1841², 1851³ and 1861⁴ agree on his birthplace being the county of Middlesex, England but after a detailed search of Middlesex and adjacent counties in FHS records, Parish records, Bishop Transcripts, wills, probates, newspapers, local history societies and the like, no record directly tying Thomas to his parents can be found. One reason for the difficulty in finding Thomas's birth record may be due to the large number of Middlesex birth and baptism records for the period 1780-1840

¹"Hertfordshire Marriages", Archives Hub (https://archiveshub.ac.uk), accessed 12 March 2020, image of the entry for the marriage of Thomas Beaumont and Selina Cato dated 7 December 1835, Rickmansworth, City of London, Hertfordshire Archives & Local Studies.

²"1841 England Census", Registration District: Watford, Sub-registration District: Watford, Place 419, Folio 5, Book 4, Page 3, image for the entry of Thomas Beaumont, accessed via "1841 England Census" image (https://www.familysearch.org), accessed 12 March 2020. This census does not give a place of birth but lists in a column the "Whether Born in Same County?" in the case of Thomas and Selina the answer is "No".

³"1851 England Census", Registration District: Watford, Sub-registration District: Watford, Place 419, Folio 106, Schedule 2, Page 3, image for the entry of Thomas Beaumont, accessed via "1851 England Census" image (https://www.familysearch.org), accessed 12 March 2020. This census gives Thomas's birthplace as Middlesex.

⁴"1861 England Census", Registration District: Watford, Sub-registration District: Watford, Place 419, Folio 104, Schedule 2, Page 3, image for the entry of Thomas Beaumont, accessed via "1861 England Census" image (https://www.familysearch.org), accessed 12 March 2020. This census gives Thomas's birthplace as Middlesex.

Read the attached document and provide an overview of the contents.

Check the citations for correctness and tell me the five most cited sources.

Is there any ambiguity in the conclusions?

How can my report be improved?



Any Questions?

Before we go to
Part two.

